



**One step Rapid Immuno-chromatographic test for the detection of IgG and IgM antibodies against brucellosis infection in human serum, plasma or whole blood.**

Brucellosis is an infectious disease that occurs from contact with animals carrying Brucella bacteria. Brucellosis is a zoonosis caused by *Brucella abortus*, *B.suis* and *B.melitensis*. Clinical manifestations of brucellosis in humans are variable and often are non-specific, and the diagnosis requires confirmation by laboratory testing. Brucellosis is a highly contagious zoonosis caused by ingestion of unsterilized milk or meat from infected animals or close contact with their secretions. Human brucellosis is a disease that is found worldwide, and it has an annual occurrence rate of more than 500,000 cases.

*Brucella spp.* are small, Gram-negative, non-motile, non-spore-forming, rod shaped (coccobacilli) bacteria. They function as facultative intracellular parasites causing chronic disease, which usually persists for life. Symptoms include profuse sweating and joint and muscle pain. Brucellosis has been recognized in animals including humans since the 20th century.

Sensit Brucella IgG/IgM Rapid Test test utilizes Anti-human IgG and Anti-human IgM as the capture molecules. Brucella LPS colloidal gold conjugate is used as the detection antibody for Brucella IgG/IgM rapid test.

## Assay Overview and Usage

Organism detected	IgG & IgM against <i>Brucella spp.</i>
Sample type	Wholeblood/Serum/plasma
Shelf Life	23 months
Storage	2-30 °C
Capture Antigens	Brucella LPS
Sensitivity	95.6% vs ELISA
Specificity	97% vs Elisa
Packing	10T, 30T, Bulk, Uncut sheets
Ref. No	S024-03

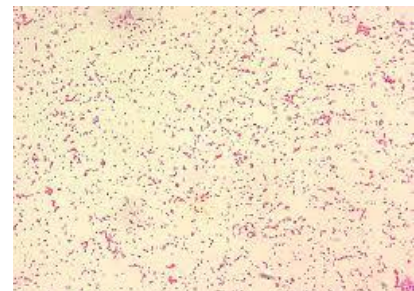
## Rapid Testing

- Quick results available in just a few minutes.
- Require no instrumentation.
- Easy to use.
- No capital expenditure.
- Do not require refrigerated storage.

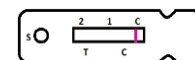


## Why Brucellosis Ab Rapid Test

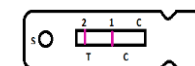
- Early identification of infected individuals, to allow intervention strategies in a clinically relevant time frame.
- Its analytical sensitivity is comparable to FDA-approved laboratory methods



**Positive**



**Negative**



**Invalid**

## Test Interpretation



Blood Collection  
test device

Serum Separation

Add sample to



Manufactured & Marketed By

**ubio Biotechnology Systems Pvt. Ltd.**

Plot No 15A, Biotechnology Zone  
KINFRA Hi-Tech Park, Kalamassery, Cochin,  
Kerala, India 683503

- Tel. No: +91-484-2532966
- Tel.No: +91 9744122269
- E mail: [contact@ubio.in](mailto:contact@ubio.in)
- Web: [www.ubio.in](http://www.ubio.in)

Product of India

